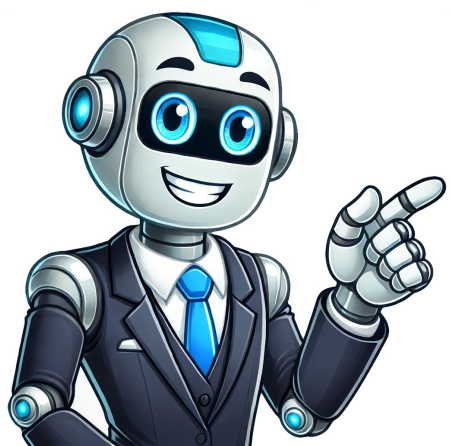


Continue



Testnav practice test

These online resources help people learn about the types of questions and tests used in assessments. A video shows how to use practice materials. Online tutorials teach students and teachers how to navigate computer-based testing software and work with different question formats. The Colorado Practice Resources provide examples of test questions and scoring information. These tools are meant to give a general idea, not a complete picture, of what the tests cover. To learn more about the assessment frameworks, blueprints, and rubrics for the CMAS tests, visit this website: . Students and test administrators can use these resources to understand the CoAlt Assessment format. This includes selected response questions, where students answer three questions based on a stimulus, and science supported performance tasks, where students complete a chart or diagram using option cards. Test administrators can find more information in the CoAlt Test Administrator Manual. Educators can access resources to prepare students for testing. Online tutorials also teach students how to use the computer-based testing software. Practice tests are available for different subjects and grades, including mathematics practice tests and MISA practice tests. Reference guides help students understand how to use a specific tool called the Equation Editor Tool. All of these resources aim to make it easier for educators to prepare students for assessments. The system does not capture teacher's references when printing reports at the end of scorable practice tests. Teachers can assign numerical values to students as a login option, and paper practice tests can be printed. The material on these tests is non-secure. ELA non-secure practice tests are available through the NJ Assessment Resource Center or within the TestNav application login screen. Various grade levels may contain additional short passage sets or long/paired passage sets within a unit. All computer-based practice tests have built-in scoring capability. New Jersey has provided answer keys and rubrics for educators for all practice tests. The NJSLA-ELA and NJGPA-ELA include one prose constructed response item for each task, allowing teachers to reference the scoring rubrics as they review student responses. Educators may find it helpful to review tutorials with students before independent work. Younger students may benefit from having tutorials read aloud. Tutorials are available in TestNav 8 and can be accessed through the computer-based assessment menu. The Digital Item Library provides access to previously administered items, which can be searched by Evidence Statements or Common Core State Standards. Released items include answer keys and scored examples of student responses. This practice test set includes units on Literary Analysis Task (LAT), Research Simulation Task (RST), and Narrative Writing Task (NWT). The provided information lists practice test options for students in Grades 3-5 English Language Arts (ELA). The tests are available in various formats, including computer-based, paper-based, and audio formats with accommodations such as screen readers, braille, and sign language. For each grade level, there are separate units and tasks, including literary analysis, research simulation, and narrative writing. Practice tests are available for all units, with answer keys and special instructions provided for students who require accommodations. The practice test sets contain three main units: Literary Analysis Task (LAT), Research Simulation Task (RST), and Narrative Writing Task (NWT). Students can choose to take the computer-based or paper-based versions of the tests, depending on their preference. Additionally, some tests are available with audio descriptions for students who use assistive technology. The resources listed include: * Practice test options * Answer keys * Accommodations such as screen readers and braille * Special instructions for students with disabilities * Resources for teachers Note that the specific details of each practice test set may vary depending on the grade level and unit. **Practice Tests for English Language Arts** This collection includes multiple versions of practice tests for students in Grade 6 and 7. The tests assess skills in three areas: * Literary Analysis Task (LAT) * Research Simulation Task (RST) * Narrative Writing Task (NWT) **Computer-Based Practice Tests** Each unit is available in six formats: 1. Regular computer-based test 2. American Sign Language (ASL) - only for accommodated students 3. Closed Captioning (CC) - for assisted listening 4. Text-to-Speech (TTS) - for visual assistance 5. Screen Reader (SR) - for visually impaired students 6. Non-Screen Reader (NSR) - for standard computer-based test **Paper-Based Practice Tests** * A paper-based version of the practice tests is available, including: + Large Print + Braille Ready File (.brf) * Accommodated students can use Screen Reader, Non-Screen Reader, or ASL formats. **Practice Test Answer Keys** Answer keys are available for each unit in three formats: 1. Computer-Based (non-accommodated), Text-to-Speech (TTS) and Closed Captioning (CC) 2. Paper Based 3. Accommodated Screen Reader, Non-Screen Reader, and American Sign Language (ASL) only The provided document outlines practice tests for Grade 8 and Grade 9 English Language Arts (ELA). The tests are categorized into three units: Literary Analysis, Research Simulation, and Narrative Writing. Each unit has multiple versions tailored for different disabilities, including American Sign Language (ASL), screen reader compatibility, closed captioning, text-to-speech (TTS), and braille accessibility. The practice tests include: * Computer-based options for Grade 8 ELA * Paper-based options for all grade levels * Braille ready files and special instructions for students with disabilities There are two sets of practice tests: one for Grade 8 ELA, which includes additional Literary Analysis Task (LAT) practice, and another for Grade 9 ELA. Note that the practice test set is not a comprehensive assessment tool but rather an educational resource to help students prepare for their respective grade levels. Test Unit 1: Literary Analysis Task (LAT) NJGPA-ELA - Unit 1 Start NJGPA-ELA - Unit 1 (ASL) Start NJGPA-ELA - Unit 1 (Closed Captioning) Start NJGPA-ELA - Unit 1 (TTS) Start NJGPA-ELA - Unit 1 (ScreenReader) Start NJGPA-ELA - Unit 1 (Non-ScreenReader) Start Computer-Based Practice Test Unit 2: Research Simulation Task (RST) NJGPA-ELA - Unit 2 Start NJGPA-ELA - Unit 2 (ASL) Start NJGPA-ELA - Unit 2 (Closed Captioning) Start NJGPA-ELA - Unit 2 (TTS) Start NJGPA-ELA - Unit 2 (ScreenReader) Start NJGPA-ELA - Unit 2 (Non-ScreenReader) Start Paper-Based Practice Tests (all units) Paper-Based Practice Test (all units) View Paper-Based Answer Document (all units) View Large Print Paper-Based Practice Test (all units) View Braille Ready File (version 1) Download Braille Ready File (version 2) Download Braille Special Instructions View NJGPA Resources Practice Test Answer Key - Computer Based (non-accommodated), Text-to-Speech (TTS) and Closed Captioning (CC) Download Practice Test Answer Key - Accommodated Screen Reader, Non-Screen Reader, and American Sign Language (ASL) only Download Practice Test Answer Key - Paper Based The full list of accessibility features embedded for all students and accessibility features that need to be identified in advance can be found in the NJ Accessibility Features and Accommodations Manual. Answer masking and color contrast (background/font color) are available for all participating students who need these tools, but they need to be identified in advance via the Personal Needs Profile (PNP). Text-to-speech for ELA is available to students that have the accommodation documented in their IEP or 504 plan and needs to be identified in advance via the Personal Needs Profile (PNP). Screen Reader Update Beginning Spring 2017 The Multiple Choice (Radio Button) interaction for Screen Reader users has been updated. The interaction has been updated to a more common design that aligns to the standard interaction used by screen reader users. Now, when students navigate into a multiple choice field, the radio button given focus by the Screen Reader will automatically be selected. Students can use the space bar to remove the selection. Students who use a screen reader should practice with the updated multiple choice interactions prior to the operational assessment this spring to become familiar with the updated interaction. Compatibility A screen reader is a software application, separate from text-to-speech embedded in TestNav, which conveys web content through audio. Screen readers are appropriate for students who are trained to use the software and who use it in the classroom, including those who are blind or have a visual impairment. Pearson's test platform is being programmed to comply with the World Wide Web Consortium's (W3C) Web Content Accessibility Guidelines (WCAG) 2.0, Level AA. We are also utilizing the W3C's Accessible Rich Internet Application (ARIA) recommendation to improve the interaction between assistive technology and assessment content. For optimal compatibility with our testing platform, assistive technology products should comply with the User Agent Accessibility Guidelines (UAAG) and support the ARIA recommendation. Large Print To print Large Print Paper Practice Tests to the optimal enlargement of 150% to 18 point font, they must be printed on 14" x 18" paper. Do not use print scaling or fit-to-page in your printer settings. Print Paper Practice Tests can be printed on larger paper by adjusting print settings or selecting "fit-to-page." Braille Guidance: In Duxbury, adjust form size to wide with 11" paper and enable "Read formatted braille without interpretation" for embossing. Default login is "Guest," but users can choose a name for reporting purposes. Paper tests are non-secure, while Computer-Based Tests have built-in scoring. NJ provides answer keys for educators. Review tutorials before independent practice, especially for younger students. The text describes various practice tests and resources for students in Grade 3 and Grade 4 math. There are three types of practice tests: Computer-Based, Paper-Based, and Special Instructions. For both Grade 3 and Grade 4, there are: * Unit 1, 2, and 3 practice tests with different language options (English, Spanish, American Sign Language (ASL), and Text-to-Speech (TTS) with graphics or text only) * ScreenReader and Non-ScreenReader accommodations for students who need them * Paper-Based Practice Tests in large print and Spanish, as well as a Braille Ready File (.prn) for students who are visually impaired Additionally, there is: * A Practice Test Answer Key available for Computer-Based tests (non-accommodated), TTS, and Closed Captioning (CC) * Separate answer keys for accommodated Screen Reader, Non-Screen Reader, and ASL * Paper-Based Practice Test answer documents in large print and Spanish Overall, these resources aim to provide a range of testing options to meet the diverse needs of students. Access practice tests for math in grades 4, 5, and 6, available in various formats including computer-based, paper-based, braille, and large print. Each unit has multiple start options such as American Sign Language (ASL), Spanish, Text-to-Speech (TTS) with or without graphics, ScreenReader, and Non-ScreenReader. Downloadable resources include practice test answer keys for both accommodated and non-accommodated tests, as well as special instructions for braille files. The practice tests cover all units and are designed to accommodate different learning needs, providing options like closed captioning (CC) and TTS for accessibility. Grade-specific resources are also available for download, catering to the unique requirements of each grade level's math curriculum. Grade 6 y 7 Math - Unidad 3: Comenzando con Unidades 1, 2, y 3. Se ofrecen diferentes opciones de práctica para estudiantes con necesidades especiales. Estos incluyen pruebas en línea sin acomodaciones, texto a voz (TTS) y subtítulos cerrados (CC), así como pruebas en papel y braille. Además, se proporcionan claves de respuesta para cada unidad y recursos adicionales para estudiantes y educadores. Grade 8 Math Unit 1 Start Algebra II or Geometry units with optional ASL, Spanish, TTS Text Only, TTS Text Plus Graphics, ScreenReader, and Non-ScreenReader formats. Access computer-based practice tests for Units 1 and 2, as well as paper-based tests for all units. View answer keys in various formats, including accommodated screen reader, non-screen reader, and ASL. Additionally, download braille-ready files, special instructions, and resources for Algebra II and Geometry courses. Start NJGPA-Math Unit 2 (TTS Text Only) Start NJGPA-Math Unit 2 (ScreenReader) Start NJGPA-Math Unit 2 (Non-ScreenReader) Start Paper-Based Practice Tests (all units) Paper-Based Practice Test (all units) View Paper-Based Answer Document (all units) View Large Print Paper-Based Practice Test (all units) View Spanish Paper-Based Practice Test (all units) View Spanish Paper-Based Answer Document (all units) View Spanish Large Print Paper-Based Practice Test (all units) View Braille Ready File (.prn, all units) Download Braille Special Instructions View NJGPA Resources Practice Test Answer Key - Computer Based (non-accommodated), Text-to-Speech (TTS) and Closed Captioning (CC) Download Practice Test Answer Key - Accommodated Screen Reader, Non-Screen Reader, and American Sign Language (ASL) only Download Practice Test Answer Key - Paper Based The NJGPA offers various accessibility features for all students, including text-to-speech, closed captioning, and screen reader accommodations. These features can be identified in advance via the Personal Needs Profile (PNP). The Multiple Choice interaction has been updated to a more common design for Screen Reader users. Students should practice with the updated interaction prior to the operational assessment to become familiar with it. Pearson's test platform complies with the World Wide Web Consortium's (W3C) Web Content Accessibility Guidelines (WCAG) 2.0, Level AA. For optimal compatibility, assistive technology products should comply with the User Agent Accessibility Guidelines (UAAG) and support the ARIA recommendation. Duxbury Braille Guidance for Users: A Step-by-Step Guide To use Duxbury, open the file in the software. If a Page Depth Exceeded error occurs, follow these steps: 1. Open DBT and navigate to the Global menu. 2. Select Embosser Setup and change the form size to wide with 11" paper or 11.5 x 11 inch paper if using 11.2sr4. 3. In the Global menu, check the checkbox labeled "Read formatted braille without interpretation" and activate the OK button. 4. Review the screen before embossing. Additionally, users can: * Take advantage of the practice test platforms' default login feature, which is set to "Guest." * Choose a name upon logging in for teacher reference when printing reports at the end of scorable practice tests. * Assign numerical values to each student as a log-in, if preferred. * Review tutorials with students before working independently, especially younger students who may benefit from having the tutorials read aloud. The Digital Item Library provides access to items previously administered on NJSLA ELA, Math, or Science tests. It is categorized by Evidence Statements and Common Core State Standards for ELA and math, and by Reporting Concepts and State Standards for science. Users can find specific items using searchable fields, which can be previewed in the computer-based assessment format or downloaded as individual or bulk PDFs. Practice tests are available for Computer-Based Grade 5 Unit 1, Unit 2, and Unit 3. Paper-Based Grade 5 Practice Tests are also available, including Unit 1, Unit 2, and Unit 3. Grade 5 Resources include NJSLA-S practice test answer and alignment documents for Science, as well as Spanish versions. Grade 8 and Grade 11 Science Practice Tests: A Comprehensive Overview The New Jersey Student Learning Assessment - Science (NJSLA-S) is a standardized test designed to assess the scientific knowledge and skills of students in grades 8 and 11. The practice tests are an essential part of this assessment, providing students with a simulated testing experience that helps them prepare for the actual exam. NJSLA-S test documents including practice tests and answer keys are available for Units 2 and 3. The NJ Accessibility Features and Accommodations Manual outlines features like answer masking and color contrast that can be used to support students with diverse needs. These accommodations, such as answer masking and adjusting background/font colors, must be specified in advance through the Personal Needs Profile (PNP) for participating students who require them.