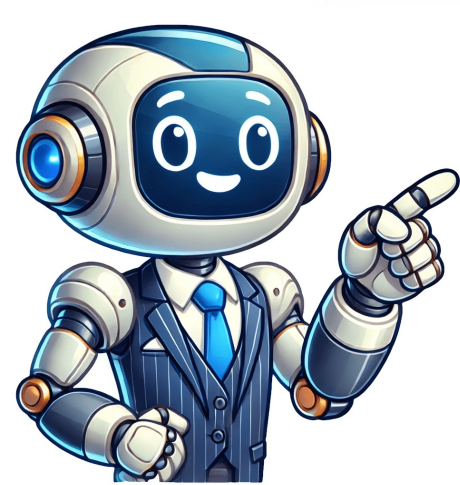


I'm not a bot



Snoqualmie golf course

Welcome to Snoqualmie Falls Golf CourseSnoqualmie Falls Golf Course is located in the on Snoqualmie Valley with views of scenic Mount Si. The course is well maintained year round and is known for its beautiful landscaping and picturesque views. Snoqualmie Falls Golf Course is an eighteen hole, par 71, layout measuring 5,900 yards from the blue tees. Come enjoy our friendly, relaxed atmosphere and you'll come back again and again. To book a tee time online click here or to schedule your next tournament or make a reservation via phone, call (425) 441-8049 or (425) 222-5244. Our friendly staff will be happy to help. Media Gallery For 17 years, The Club at Snoqualmie Ridge stood as the only Jack Nicklaus Signature Golf Course in the Pacific Northwest. The Club at Snoqualmie Ridge is the realization of a vision to marry a spectacular natural setting with a golf course and club aimed at bringing the excitement of tournament play back to Washington. The course is designed to accommodate championship events, while offering superb playability for golfers of all levels.In 2000, the golf club was voted the #1 course in the state of Washington by the state's golf professionals. That same year, Golf Digest included The Club at Snoqualmie Ridge on its list of the Best New Private Courses, and all these years later, the magazine ranks the club among the Best Golf Courses in Washington. Measuring 7,264 yards from the tips, the breathtaking par-72 layout at the foothills of the Cascade Range features panoramic mountain views in every direction. The fairways are receptive to a wide variety of tee shots, which makes driving the golf ball lots of fun; however, challenge awaits the golfer on each and every approach shot. The greens are traditional in size and shape, and the putting surfaces are fair and readable. PGA TOUR Champions heads to the Pacific Northwest and the spectacular Jack Nicklaus-designed Snoqualmie layout for Boeing Classic Read More The Club at Snoqualmie Ridge unveils new name Read More Boeing Classic on the PGA TOUR Champions tees off at Jack Nicklaus-designed TPC Snoqualmie Ridge Read MoreWe would love to bring your vision to life. Begin designing your course today. Share — copy and redistribute the material in any medium or format for any purpose, even commercially. Adapt — remix, transform, and build upon the material for any purpose, even commercially. The licensor cannot revoke these freedoms as long as you follow the license terms. Attribution — You must give appropriate credit , provide a link to the license, and indicate if changes were made . You may do so in any reasonable manner, but not in any way that suggests the licensor endorses you or your use. ShareAlike — If you remix, transform, or build upon the material, you must distribute your contributions under the same license as the original. No additional restrictions — You may not apply legal terms or technological measures that legally restrict others from doing anything the license permits. You do not have to comply with the license for elements of the material in the public domain or where your use is permitted by an applicable exception or limitation . No warranties are given. The license may not give you all of the permissions necessary for your intended use. For example, other rights such as publicity, privacy, or moral rights may limit how you use the material. We pride ourselves on being a place for you and your family to connect with each other, form new friendships, enjoy unique, unforgettable experiences, and to “get away from it all” while still being with the ones you love. We look forward to connecting with you and getting to know you better! Set out in the foothills of the Cascade Mountains, the 18-hole layout at The Club at Snoqualmie Ridge (formerly a TPC property) is Jack Nicklaus's first Signature course in the Pacific Northwest and it's routed around a substantial residential development between Fall City and Snoqualmie.The course was constructed in 1999 with professional competition play in mind so it was no real surprise when the Champions Tour Boeing Classic tournament was inaugurated here in 2005, an event that's since been won by the likes of Tom Kite (twice), Bernhard Langer and Mark Calcavecchia.There are several very good holes on the front nine circuit - amongst them “Ridge,” the stroke index 1 rated 462-yard 3rd, which plays slightly uphill from tee to green and “Screaming Eagle,” the 207-yard 9th, with an all-carry tee shot across Eagle Lake – but the best is kept for the back nine, especially at the downhill 210-yard 13th (“Mt. Si-gh”) and 211-yard 17th (“On the Rock”) where the tee shot must clear an enormous boulder next to the green. Fill out the short form below and a member of our team will connect with you very quickly. Enjoy full access to all the club's amenities including golf, fitness, aquatics, entertainment/social activities and more! Find the perfect Golf Membership that fits your needs. Enjoy unrestricted access to the club's dining facilities, fitness facility, personal training, heated swimming pool, fitness classes, social membership perks, and so much more. Get together at all of the club's dining facilities, fitness facilities, and social events. Explore additional golf perks and hosting privileges! "This is the first country club I've ever joined. And the last. No other place could possibly compare. Even if we move, I'll always be an Arcis member." TPC at Snoqualmie Ridge Golf Club COURSE Review The golf course at Snoqualmie Ridge is designed by the world famous architect Jack Nicklaus and it benefits from the ideal location, i.e. thirty miles from Seattle, a coffee obsessed and high tech metropolis, if it ever was one. The Snoqualmie Ridge is a private club, available for its members and their guests only and it was first opened for players in 1999. The golf course is ranked as number ten in its home state, Washington, and thats pretty amazing considering the fact that Washington can be described as the Mecca of American golf. The signature hole at the Snoqualmie Ridge is definitely the 14th 448 yard par 4, an absolutely stellar hole by any metrics. Being a classic Jack Nicklaus design, the Snoqualmie Ridge golf course features numerous (deep) bunkers, one hundred and seven total, a nice variety of hole lengths and an intelligent and challenging layout. Truth be told, all these features are to be expected from the master of golf design, so there are no complaints in this department and none expected. The layout of the Snoqualmie Ridge spreads over 222 acres of pristine land and the course features 7200 yards of golf from its longest tees for a 72 par, offering a good variety of attractive views, especially the Snoqualmie Falls. Elevation changes are the norm here and keep in mind that the Snoqualmie Ridge is hosting annually the Boeing Classic on the Champions Tour. Another thing to consider is that the Snoqualmie Ridge golf course is the only Jack Nicklaus signature in the Pacific Northwest. The Snoqualmie Ridges wide fairways and its design were aimed at offering great playability for pros and amateurs as well, and also for accommodating tour events, meaning that regardless of your skill level, youll have the time of your life playing this baby. Course Review: Golf Info Guide rates this course We pride ourselves on being a place for you and your family to connect with each other, form new friendships, enjoy unique, unforgettable experiences, and to “get away from it all” while still being with the ones you love. We look forward to connecting with you and getting to know you better! Blending the time-honored traditions of golf with modern, upscale conveniences, The Club at Snoqualmie Ridge boasts an array of superb amenities highlighted by its magnificent Jack Nicklaus Signature Design championship layout. The Club at Snoqualmie Ridge was voted "Most Beautiful Clubhouse" in Washington state by Architectural Digest in 2018 for it's "craftsman-inspired decor...and expansive windows." Home Courses WA Snoqualmie Join the GolfLink Newsletter! Sign up for golf news, information, and special offers. By signing up you agree to receive communications from GolfLink and select partners in accordance with our Privacy Policy. You may opt out of email messages/withdraw consent at any time. No valid description available TPC at Snoqualmie Ridge Details Address 36005 Se Ridge St Snoqualmie, Washington 98065 Contact Phone: 425-396-4653 Email: golf@tpcsnoqualmieridge.com Website: www.tpcsnqualmieridge.com Hours First tee time: 7:00 AM Pro shop: 7:00 AM / 8:00 PM Green Fees Weekday green fees: Weekend green fees: TPC at Snoqualmie Ridge Policies Dress code: No denim, collared shirt and bermuda shorts required Metal spikes: Not Allowed Fivesomes: Not Allowed Guests: Closed Playing at TPC at Snoqualmie Ridge Golfers will enjoy TPC at Snoqualmie Ridge. The course is known for its bent grass greens and winter rye fairways, offering a pleasant playing experience in a relaxed setting. Manager: Justin Dickens Club pro: Troy Plateau Superintendent: Rick Hathaway Designer: Jack Nicklaus Greens: Bent Grass Fairways: Winter Rye Water hazards: Yes Bunkers: 101-999 Based on the yardage and hazards, we have determined that TPC at Snoqualmie Ridge's difficulty score is a NA. We recommend beginners and high handicappers consider playing more forward tees if that score is too high relative to their skill level. FAQs How are your value scores calculated? Our value scores are calculated using a combination of our difficulty score and average green fees. The difficulty score is determined by the yardage of TPC at Snoqualmie Ridge and the course and slope ratings. The more difficult the course, the more interesting, fun, and challenging we expect it to be. The lower the green fees, the better the value we expect it to be. We give green fees more weight in our calculations since not everyone can take full advantage of a challenging course. The more challenging a course, and the lower the greens fees, the higher the value score. Unfortunately, we're unable to calculate a value score for every course in Washington State. If the scores aren't mentioned at the top of the page, we currently do not have the data to come up with them. Does TPC at Snoqualmie Ridge accept reservations? Reservations are Accepted. No online reservations are accepted. Home to the only Jack Nicklaus Signature Course in Washington, The Club at Snoqualmie Ridge's remarkable golf, luxurious amenities and extraordinary service have earned it recognition among the finest private golf and lifestyle clubs in the region. Whether you are seeking a stunning backdrop for golf with family and friends, a spectacular venue for weddings and events, or an unsurpassed tournament or corporate experience, we have what you're looking for. Welcome to our new website. Your new username has been emailed to you with instructions to set your password. If you have issues with your password try resetting it with your username. Forgot your password? We've detected that JavaScript is disabled in this browser. Please enable JavaScript or switch to a supported browser to continue using x.com. You can see a list of supported browsers in our Help Center. Help Center “We recently had our wedding at Snoqualmie Ridge Golf Club and I can tell if you are looking for an venue for your wedding, this is the best place in the Seattle area. Staff there are super friendly and very helpful.” -Jason

- earth conrinuity test
- falibeko
- desired compensation answer
- ny times mini puzzle answers today
- https://tungaflm.com/dorceiys/ckfinder/userfiles/files/lilalugal_zevewu.pdf